



**Hewlett Packard
Enterprise**

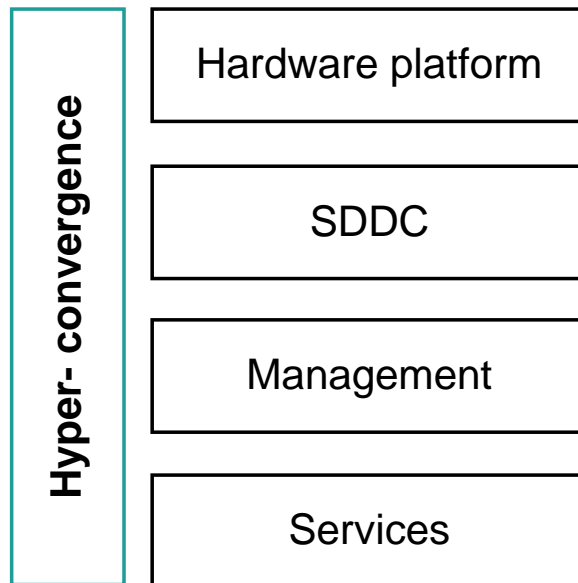
HPE Hyper Converged 250

HPE Converged Data Center
Infrastructure and HPE Storage



Hyper-convergence: Support for a hybrid infrastructure

Simplify operations. Lower costs. Gain rapid time-to-value.



Fast

Rapidly develop and deliver new services and growth



Simple

Eliminate management complexity and reduce project risk



Efficient

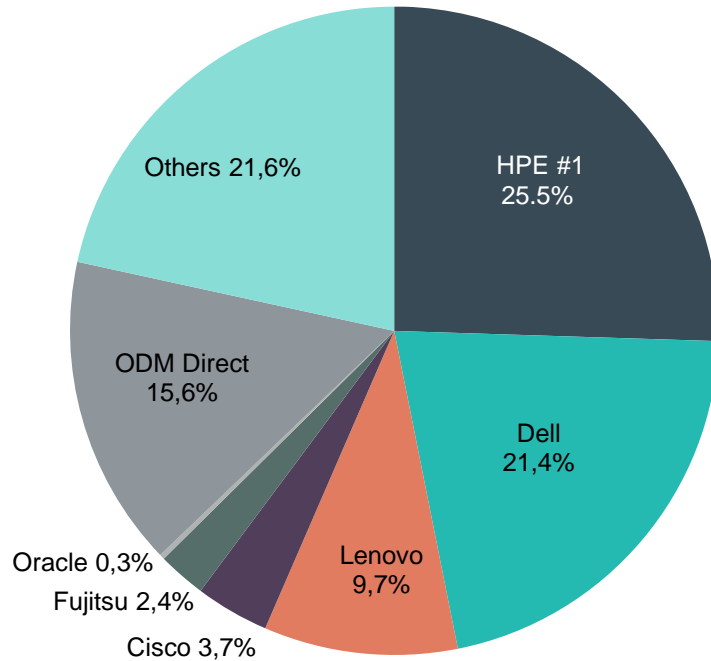
Increase IT operation efficiency for lower operating expenditures (OPEX)

Infrastructure matters!

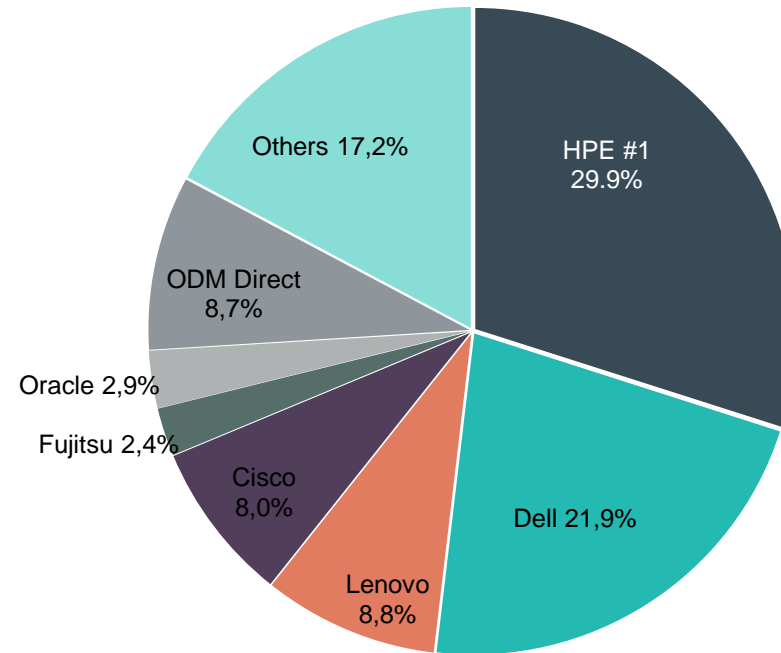
HPE: Number one in total x86 units and revenue for more than 19 years straight

Windows Server: The market share leader share of infrastructure operating system

WW x86 server unit share, 2Q15
2,274,000 units



WW x86 server revenue share
\$10.8 billion USD



Source: IDC Worldwide Quarterly Server Tracker, Aug 2015

Proven HPE ProLiant technology

Intelligent elements that minimize the OPEX by reducing downtime and manageability

HPE Hyper Converged 250 for Microsoft Cloud Platform System (CPS) Standard



What makes the difference ...

Active Health System



Smart Memory



Smart Array



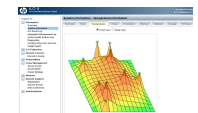
Smart SSD and SAS drives



iLO



3D Sea of Sensors



HPE OneView InstantOn start up and expansion wizard

- Just enter IP address range, credentials, and license information
- HPE OneView InstantOn quick start wizard provides
 - IP addressing
 - Cluster build
 - System standup
- Log into HPE OneView for VMware vCenter or for MS SC and you are ready to provision your first virtual machine (VM)
- Use HPE OneView InstantOn to add more systems to the cluster

Providing the same experience, whether you're deploying your first or fourth appliance



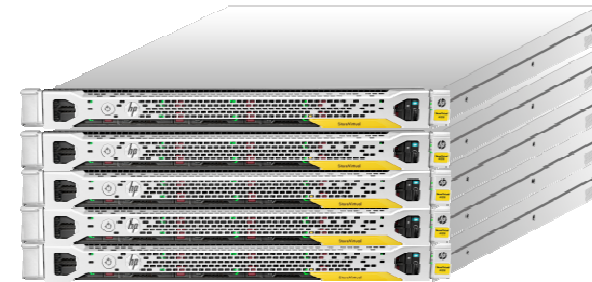
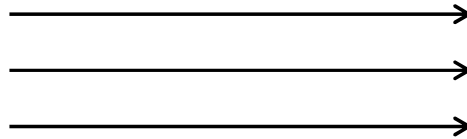
Built-in business continuity with HPE StoreVirtual VSA

Seven years of experience with software-defined storage

- Get the benefits of traditional SAN storage without the cost
- Get seamless application high availability with transparent failover across racks, rooms, building and cities
- Tightly integrate with storage management functions of Microsoft applications
- Foolproof disaster recovery with seamless and non-disruptive data mobility



Additional storage for hyper-converged environments



HPE StoreVirtual Array

- Non-disruptively add HPE StoreVirtual storage-only resources
- Can also be provisioned from HPE OneView for Microsoft System Center
- Shared storage for legacy applications

Note: HPE recommends StoreVirtual 4335 or StoreVirtual VSA



HPE Hyper Converged 250 with VMware vSphere

What's New – HPE Hyper Converged 250

Freedom to customize with new configure-to-order model

Increased capability

- Greater performance with new HP Apollo 2000 Gen9 servers

Improved flexibility

- CTO model facilitates more diverse workload requirements
- Support for both VMware vSphere 5.5 and 6.0

Lower entry cost

- 2-node configuration enables better fit for ROBO and medium-sized businesses

Improved integration

- Integrated VMware vCenter simplifies the management of multiple deployments



HPE Hyper Converged 250 – compact and powerful

SPECIAL CONSIGN

- Compact 2U platform with 4 compute/storage nodes based on latest HP Apollo Gen9 technology
- 4 identically configured nodes with
 - (2) Intel Xeon **E5-2620v3**
 - 192GB
 - (2) 10GbE SFP+ network connectivity
- Hybrid storage (2x 400GB SSD + **3x** 1,2TB SAS HDD)
- Memory options up to 512GB per node
- VMware vSphere Enterprise
- 3y support



Hybrid Storage Configuration

4x 1.2TB SAS SFF + 2x 400GB SFF
SSDs
~ 7.5TB HA storage for 4-node systems
~ 5.5TB HA storage for 3-node systems

Capacity Configuration

6x 1.2TB SAS SFF
~ 11.5TB HA storage for 4-node systems
~ 8.5TB HA storage for 3-node systems

Starting with smaller configurations, and growing in smaller increments

Hyper Converged 250 now starts with two or three node configurations

- Start smaller for Remote and Branch Offices and Medium-sized Businesses
- Expand existing installations of current and previous generation models with three nodes*
- Same choice of hardware components as system with four nodes

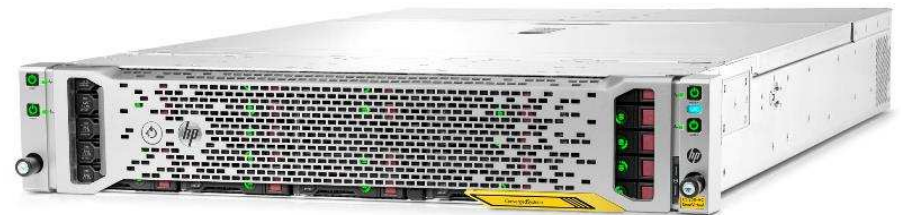
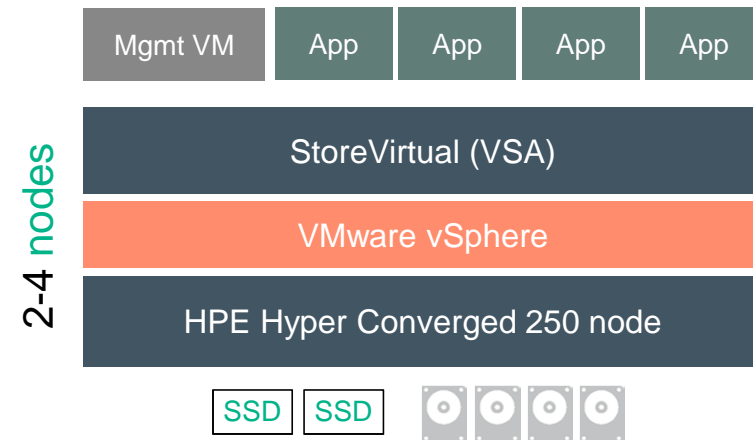


* Same hardware configuration strongly recommended for balanced compute and storage.

All software pre-installed -no assembly required

Pre-integrated software components

- VMware vSphere 5.5 or 6.0 (upgradable, mix not supported)
- HP StoreVirtual VSA with LeftHand OS 12.5 for clustered, highly available storage
- HP OneView InstantOn 1.2
- HP OneView for VMware vCenter 7.8

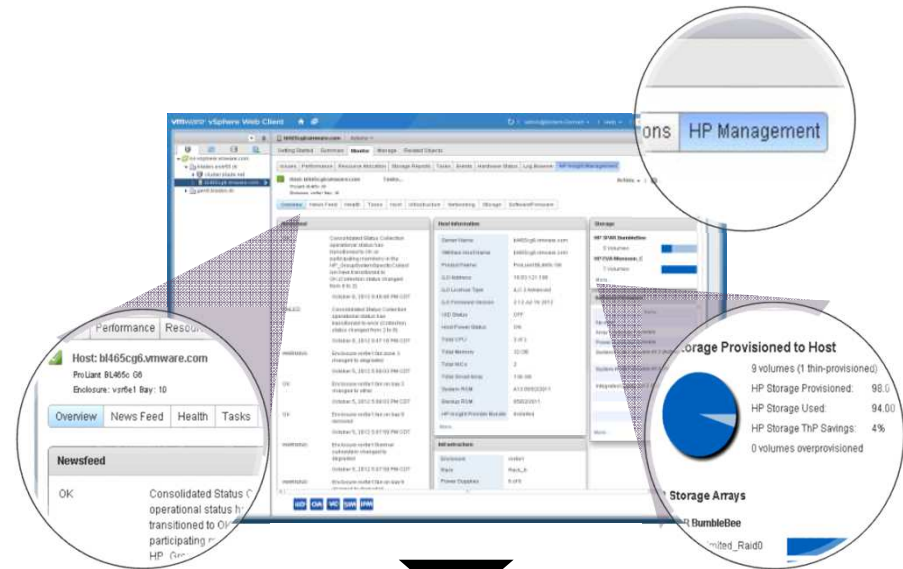


* vSphere and vCenter licenses must be purchased for the HPE Hyper Converged 250. Valid software license required for pre-installed software. Customer with ELA and vCloud Air Partner can reuse their licenses on this platform. When including VMware Horizon licenses on the same quote, Horizon components are not pre-installed on the system.

Integrated centralized management

Day-to-day operation directly from VMware vCenter console

- Integration with centralized instance of VMware vCenter
- Option in OneView InstantOn during initial deployment to use "Remote vCenter" (instead of built-in instance)
- Monitoring of multiple management zone and remote site deployments
- Works in the context of best practices and configuration limits for remote management for vSphere
- HP StoreFront Analytics - provide dashboards to visualize and analyze data from HP StoreVirtual storage array directly within vRealize Operations Manager

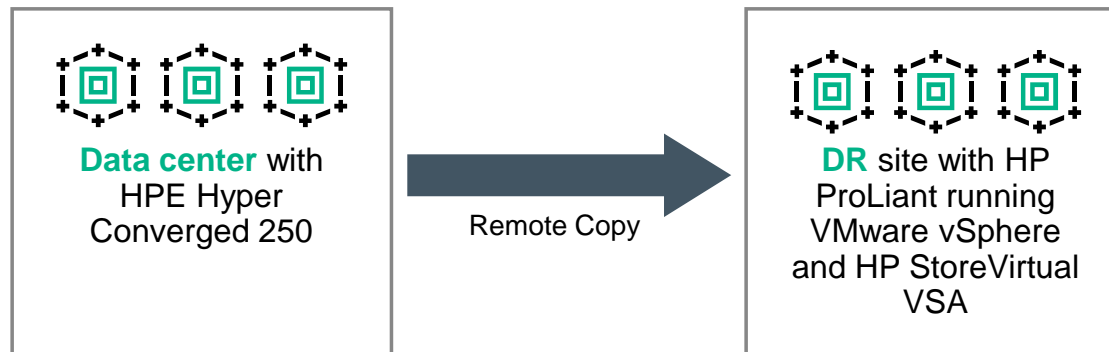


Centralized virtual machine management, including virtual machine and storage provisioning

Business Continuity across the globe

- Optimize bandwidth and integration with MultiPathing IO (MPIO)
- Real-time protection from location failure via Multi-site HA
- VMware Multisite Stretch Cluster (vMSC) certification
- Automated appliance/rack/room/building failover with zero RPO

Virtual machines can be brought **online from replicated volumes**



Services for the New Style of Business

Reduce risk and realize agility and stability

Support for HPE Converged Infrastructure

Proactive Care

Prevent issues and get me to your best experts when there is an issue

Proactive Care Advanced

Dedicated resources to help me maximize performance

Foundation Care

Keep my converged infrastructure running

Hyper-converged services

Install and startup

Help me deploy an HPE hyper-converge system in my remote office where I lack IT expertise

HPE Hyper Converged 250

HPE OneView management

Bring up with HPE OneView InstantOn
Day-to-day operations with HPE OneView for
Microsoft System Center or VMware vCenter

All-inclusive data services

Scalability, high availability,
powered by
HPE StoreVirtual technology



**Applications
running on Microsoft Hyper-V or
VMware vSphere**

All virtualized workloads running
on same appliance utilizing a
powerful server platform

Get started today

Contact your HPE sales representative or channel partner to discuss:

- **Agility assessment** to determine how quickly you can transform to a hybrid infrastructure
- **Infrastructure assessment** to create a plan for your data center modernization
- **Technical evaluation** to assess the performance and sizing of the new HPE Hyper Converged 250

For more information visit:

hpe.com/info/hyperconverge

www.microsoft.com/en-us/server-cloud/products/cloud-platform-system/standard.aspx



Hewlett Packard
Enterprise

Thank you